

# CURATED FOR THE COLLECTOR

FINE ART, JEWELS & OTHER RARITIES



*M.S. & Rau*  
FINE ART • ANTIQUES • JEWELS





### *Rare Double Bird Box*

Bird boxes featuring two birds are exceptionally rare due to the mechanism's added complexity, and this silver, enamel and hand-painted porcelain example represents the pinnacle of the art form. 🏆

20th century • 4<sup>1</sup>/<sub>4</sub>"w x 2<sup>7</sup>/<sub>8</sub>"d x 2"h

\$39,850 • #31-5378





# CURATED FOR THE COLLECTOR

---

## FINE ART, JEWELS & OTHER RARITIES

Throughout our 110 years in business, M.S. Rau has endeavored to seek the utmost in quality, rarity and beauty, offering only the best for discerning collectors worldwide. We proudly continue this tradition today and are excited to share some of the significant objects in our collection.

This specially-curated catalog includes an assortment of objects from antiquity to the 20th century, providing intrigue for every collector. Whether you are drawn to the elegant jeweled and silver creations of Tiffany and Co., the impressionistic canvases of Theodore Butler, or the superb craftsmanship of Wedgwood, M.S. Rau offers these world-class selections for your consideration. If you discover something of interest, please contact your Sales Consultant.

### ENHANCE YOUR EXPERIENCE

---



Scan these codes throughout the catalog to view videos and more.



Look for this icon for items with a video, and scan the nearby code to view.



# Bejeweled Beauties

Breathtaking works of jeweled art featuring  
some of the world's rarest gemstones



## *Oscar Heyman Diamond & Gold Necklace*


Diamonds: 15.99 carats

18K yellow gold

A classic design with a modern twist, this link necklace by the famed Oscar Heyman features 304 sparkling white diamonds. 15" length.

\$68,500 • #31-5559



Scan to watch videos of  
items with the  icon



***Colombian Emerald Ring***

Emerald: 13.67 carats  
Yellow diamonds: 1.23 carats | 18K yellow gold

Colombian emeralds are so desired for their incredible depth of color. This stunning example displays the ideal green hue, perfectly complemented by vibrant yellow diamonds. ✨

\$124,500 • #31-5167



***Fancy Intense Yellow Diamond Bracelet***

Yellow diamonds: 41.43 carats  
18K yellow gold

Brilliant natural fancy intense yellow diamonds line the entire length of this bracelet, and only a fraction of all gem-quality diamonds possess the richness of color to bear this exclusive color grade. 7" length. ✨

\$98,500 • #31-4037





***Burma Ruby Ring by Boucheron***

Ruby: 0.89 carat | Diamonds: 3.00 carats  
18K yellow gold

Certified as untreated and Burmese in origin, this vibrant ruby displays the desirable deep red coloring associated with the best rubies from the region. 📄

\$38,850 • #31-5616



***Victorian Diamond Peacock Brooch***

Old Mine-cut diamonds | Ruby accents  
Yellow gold over silver | Mid-19th century

A graceful white peacock in flight comes to life with sparkling diamonds and vivid ruby eyes in this romantic Victorian brooch. The bird grasps an approximately 1.50-carat diamond briolette. 📄

\$44,500 • #31-5582



Scan to watch videos of items with the 📄 icon





***Buccellati Grape Vine Necklace***

18K yellow and white gold

At once bold and feminine, this vintage necklace was crafted by celebrated Italian designer Buccellati. Designed in a bacchanalian motif, the piece reflects the firm's luxurious, Renaissance-inspired aesthetic and mastery of goldsmithing. 16" length. 🍷

\$39,500 • #31-5577






*Victorian Cameo Jewelry Suite*

18K yellow gold | Circa 1860

Four exquisitely carved agate and cornaline cameos depicting mythological muses and goddesses stand out against gold flourishes in this bracelet, brooch and earrings.

\$36,500 • #31-5583



Scan to watch videos of items with the  icon





**Fire Opal Convertible Necklace & Bracelet**

Opals: 10.00 carats | Diamond accents  
Platinum & 21K yellow gold | Early 20th century

The vibrance of rare faceted fire opals is offset by pure white diamonds in this Edwardian-era necklace. The versatile piece's length is adjustable to convert from a choker necklace to a bracelet (below). 14 1/2" length, adjustable. 📺  
\$36,500 • #31-4890



**Oscar Heyman Ceylon Orange Sapphire Ring**

Sapphire: 4.38 carats  
Diamonds: 1.52 carats | Platinum

Orange sapphires are among the most unique and highly prized of all fancy colored sapphires, particularly those that exhibit such a vivid, saturated hue as this. Signed "HB." 📺  
\$54,500 • #31-5186







### *Diamond Pendant Necklace*

Diamonds: 6.43 carats | Platinum

Dazzling white diamonds displaying coveted D-F color and VS clarity adorn this necklace in a dynamic geometric pattern. 16" length. 📺

\$34,500 • #31-4866

### *Purple Sapphire Ring*

Sapphire: 2.53 carats

Diamonds: 2.36 carats | Platinum

A lovely violet hue distinguishes this untreated sapphire. Purple sapphires are among the most sought-after colored gemstones and are highly treasured among gem collectors. 📺

\$68,500 • #31-5445



Scan to watch videos of items with the 📺 icon





***Oscar Heyman Multi-Gem Bracelet***

Sapphires: 5.38 carats | Tsavorites: 2.19 carats  
Yellow diamonds: 2.35 carats  
White diamonds: 4.82 carats | Platinum

A wonderful collection of colorful gemstones combine with white baguette diamonds to create a streamlined yet playful design from the renowned Oscar Heyman. Signed "HB." 6½" length. 🍀

\$80,000 • #31-5557



***Black Opal Ring***

Opal: 8.50 carats | Diamonds: 1.25 carats  
Emerald accents | Platinum

Celebrated for their kaleidoscopic color and luminous beauty, black opals are the most coveted type of opals. This example is set apart by its large size and exceptional play of color. 🍀

\$64,500 • #31-4895



# Artistic Heights

---

Beautiful, museum-quality paintings that  
captivate and inspire.

## LÉON - JEAN - BASILE PERRAULT

1832-1908 | French

### *The Wood Gatherer*

Dated 1880 | Oil on canvas

Signed and dated "L-Perrault 1880" (lower right)

This work exemplifies the favorite theme of Academic masters Léon-Jean-Basile Perrault and his mentor William-Adolphe Bouguereau – the peasant girl – and this painting by Perrault is appealing both in subject matter and its masterful execution.

Perrault specialized in portraying children in scenes of innocence and domesticity, and this young girl gathering firewood is an exceptional rendition of his favorite subject. The composition displays luminous coloration, a hallmark of the artist's work and the French Academy. Paintings such as this propelled Perrault into a successful artistic career, and his works were widely exhibited at the Salon and collected among the European élite.

Canvas: 45<sup>3</sup>/<sub>4</sub>"h x 35<sup>1</sup>/<sub>4</sub>"w | Frame: 60<sup>1</sup>/<sub>2</sub>"h x 48"w

\$198,500. #31-5659















**PAUL DÉsirÉ TROUILLEBERT**

1831-1900 | French

*Dance of the Nymphs*

19th century | Oil on canvas

Signed "Trouillebert" (lower left)

This lyrical landscape was composed by the French Barbizon painter Paul Désiré Trouillebert. A joyful scene of nymphs dancing in the morning mist, the work closely resembles an important work by the great Camille Corot, which resides in the Musée d'Orsay. Trouillebert perfectly captures the poetic atmosphere of Corot's groundbreaking works, while imbuing this scene with a freshness and character that is all his own. The work perfectly combines a realistic depiction of the natural world with a spirited romanticism.

Canvas: 38<sup>3</sup>/<sub>4</sub>"h x 51<sup>1</sup>/<sub>2</sub>"w | Frame: 50"h x 62<sup>3</sup>/<sub>4</sub>"w  
\$98,500. #31-1655





**ANDREA LANDINI**

1847-1912 | Italian

*His Favorites*

Late 19th century | Oil on canvas  
Signed "A. Landini" (lower left)

A cardinal chuckles at his adorable kittens' antics in this exceptional work by the Italian Cardinal painter Andrea Landini. The composition displays a wonderful sense of realism and frivolity, exhibiting Landini's skill for rich texture and detail. His paintings are distinguished by meticulous workmanship, intrinsic humor and charm.

Cardinal paintings offered a light-hearted look at the daily life of the clergy. Changing public attitudes toward the clergy after the First Vatican Council of 1869 allowed for non-religious images of church officials and made such comical depictions as this not only acceptable, but greatly desirable.

Canvas: 18<sup>3</sup>/<sub>4</sub>"h x 15<sup>1</sup>/<sub>2</sub>"w | Frame: 23<sup>5</sup>/<sub>8</sub>"h x 20<sup>3</sup>/<sub>4</sub>"w  
\$74,500. #31-2430









**FRÉDÉRIC SOULACROIX**

1858-1933 | French

*An Elegant Entrance*

Late 19th century | Oil on canvas

Signed "F. Soulacroix" (lower left)

A superb recorder of the lives of the affluent French élite, Soulacroix sought to revive the leisurely elegance of a bygone era in his canvases. The artist was among the most famous and accomplished painters of this idealized genre, referred to as the "Silk and Satins School" of costume painters, and few could match the remarkable level of detail and realism Soulacroix imparted onto each of his canvases.

In this example, a stylish beauty theatrically glides through sumptuous satin curtains, the gleaming folds of the fabric of the drapes and her gown appearing smooth to the touch. This painting exemplifies the artist's distinctive style, boasting an almost photographic realism in its execution.

Canvas: 30"h x 17<sup>3</sup>/<sub>4</sub>"w | Frame: 40<sup>3</sup>/<sub>4</sub>"h x 28<sup>3</sup>/<sub>4</sub>"w

\$54,500. #31-4728















## **FÉLIX-FRANÇOIS GEORGES ZIEM**

1821-1911 | French

### ***View of Venice***

Late 19th century | Oil on canvas

Signed "Ziem" (lower right)

French artist Félix-François Georges Ziem's infatuation with Venice became the cornerstone of his career and the subject of his most desirable paintings, as demonstrated by this brilliant view of the Grand Canal at sunrise. The composition celebrates the grandeur of the city's architecture and its commerce, while also serving as a masterful study of light and color.

Ziem achieved great success with his views of The Floating City, exhibiting frequently at the Paris Salon. He was among the most famous artists of his day, so much so that in 1864 he had under his tutelage then Princess (later Queen) Victoria.

Canvas: 23<sup>3</sup>/<sub>8</sub>"h x 31<sup>3</sup>/<sub>4</sub>"w | Frame: 32<sup>3</sup>/<sub>8</sub>"h x 41"w  
\$98,500. #31-5328











**J. C. LEYENDECKER**

1874-1951 | American

***Three Wise Men***

Circa 1900 | Oil on canvas

Signed "J.C. Leyendecker" (en verso)

The three wise men present gifts to the newborn baby Jesus in this work by famed American illustrator J.C. Leyendecker. Created in preparation for the December 1900 Christmas cover of *Success* magazine, the piece is exemplary of Leyendecker's distinct, hatched illustration style.

Leyendecker was the preeminent illustrator of his era. He was frequently commissioned to illustrate the most high-profile editions of the most popular publications of the day, most notably the holiday issues. This particular piece provides a rare and intriguing look into his artistic process for these important covers.

Canvas: 18"h x 27"w | Frame: 24<sup>1</sup>/<sub>2</sub>"h x 33<sup>1</sup>/<sub>2</sub>"w

\$128,500. #31-4100





**JEAN DUFY**

1888-1964 | French

***Les trapezistes***

Dated 1929 | Oil on canvas

Signed and dated "Jean Dufy 29" (lower right)

The circus was one of Jean Dufy's favorite themes, and he returned to it repeatedly throughout his career. *Les trapezistes* offers true artistic spectacle on canvas, conveying the over-the-top, magical energy of the French circus. Dufy combines bold black outlines with broad areas of vivid color, creating dynamic planes that captivate the viewer, resulting in a work full of vigor and spontaneity.

*Les trapezistes* was painted in 1929, when Dufy was in the midst of a long string of high-profile and successful exhibitions in Paris and New York, including several appearances at the Salon d'Automne. With its freedom of expression and daring experimentation, this painting represents the pinnacle of the artist's career when he had reached the height of his creativity and fame.

Canvas: 21<sup>5</sup>/<sub>8</sub>"h x 18<sup>1</sup>/<sub>4</sub>"w | Frame: 30<sup>1</sup>/<sub>4</sub>"h x 26<sup>3</sup>/<sub>4</sub>"w

\$98,500. #31-4578









## THEODORE EARL BUTLER

1861-1936 | American

### *Valley of the Seine, Giverny*

Painted in 1912 | Oil on canvas

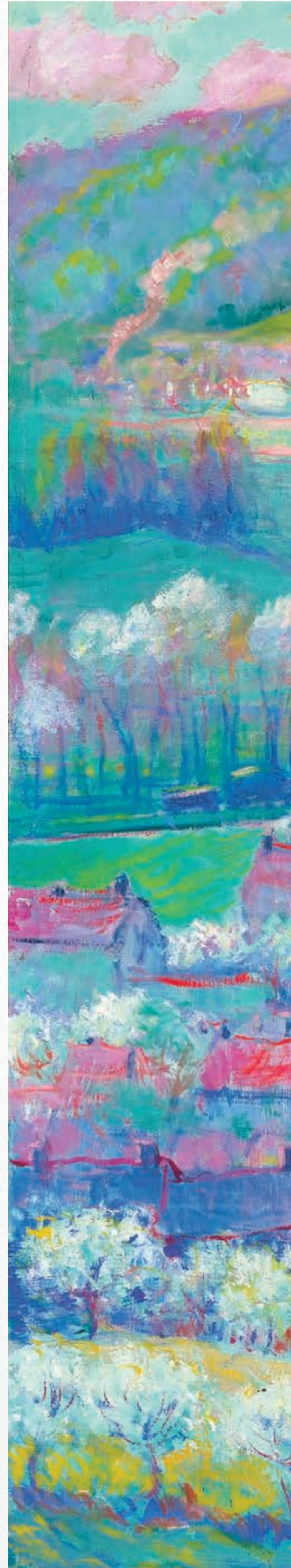
Signed "T.E. Butler" (lower right)

This monumental masterpiece brings to life the village of Giverny, France, home to American Impressionist Theodore Earl Butler and his father-in-law, the great Claude Monet. As part of the Monet family, Butler was one of the very few artists granted the privilege to paint alongside Monet in his gardens at Giverny, and he renders this scene with a vibrant, spontaneous style reminiscent of his father-in-law.

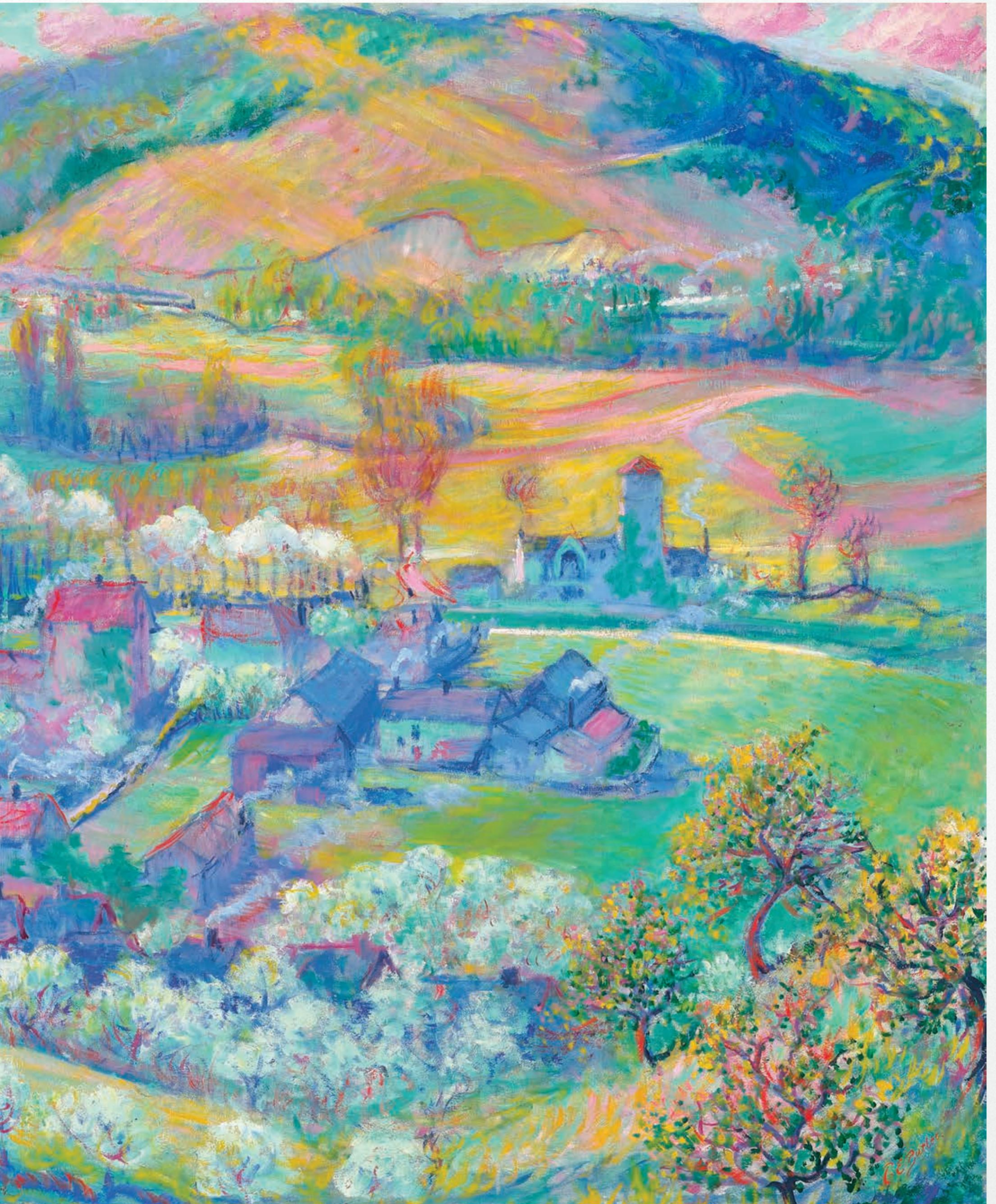
Executed on a grand scale and employing a bird's-eye perspective, Butler embraces the sublime in this composition. He captures a vast view of the Seine Valley with several charming details, including the artist's own home and a train trailed by billowing smoke. Butler conveys the vitality of the landscape through a suggestive application of paint, resulting in a scene that feels energetic and modern.

Canvas: 45<sup>3</sup>/<sub>4</sub>"h x 45<sup>1</sup>/<sub>2</sub>"w | Frame: 53<sup>1</sup>/<sub>4</sub>"h x 53<sup>3</sup>/<sub>8</sub>"w

\$268,500. #31-5481









# Sterling Reputation

Incredible works of silver artistry from  
across the globe.



## *Tiffany & Co. Chrysanthemum Tazze Set*

Introduced in 1878, Tiffany's signature Chrysanthemum pattern is still considered the firm's finest and most elegant. Its intricate floral motif lends an exuberance to this set of four tazze, executed in brilliant silver gilt.

Marked "Tiffany & Co."  
Circa 1902-1907 • 8<sup>7</sup>/<sub>8</sub>" dia. x 4<sup>1</sup>/<sub>2</sub>" h  
\$34,500 • #30-8167



### *Silver Presentation Inkstand*

Made especially for Sir Arthur Steel-Maitland, the United Kingdom's Minister of Labour, this unique inkstand was crafted by the firm of Turner & Simpson to resemble Birmingham's Salford Bridge.

Hallmarked 1926 • 16<sup>1</sup>/<sub>4</sub>"w x 11<sup>5</sup>/<sub>8</sub>"d x 7"h  
\$14,850 • #31-5330



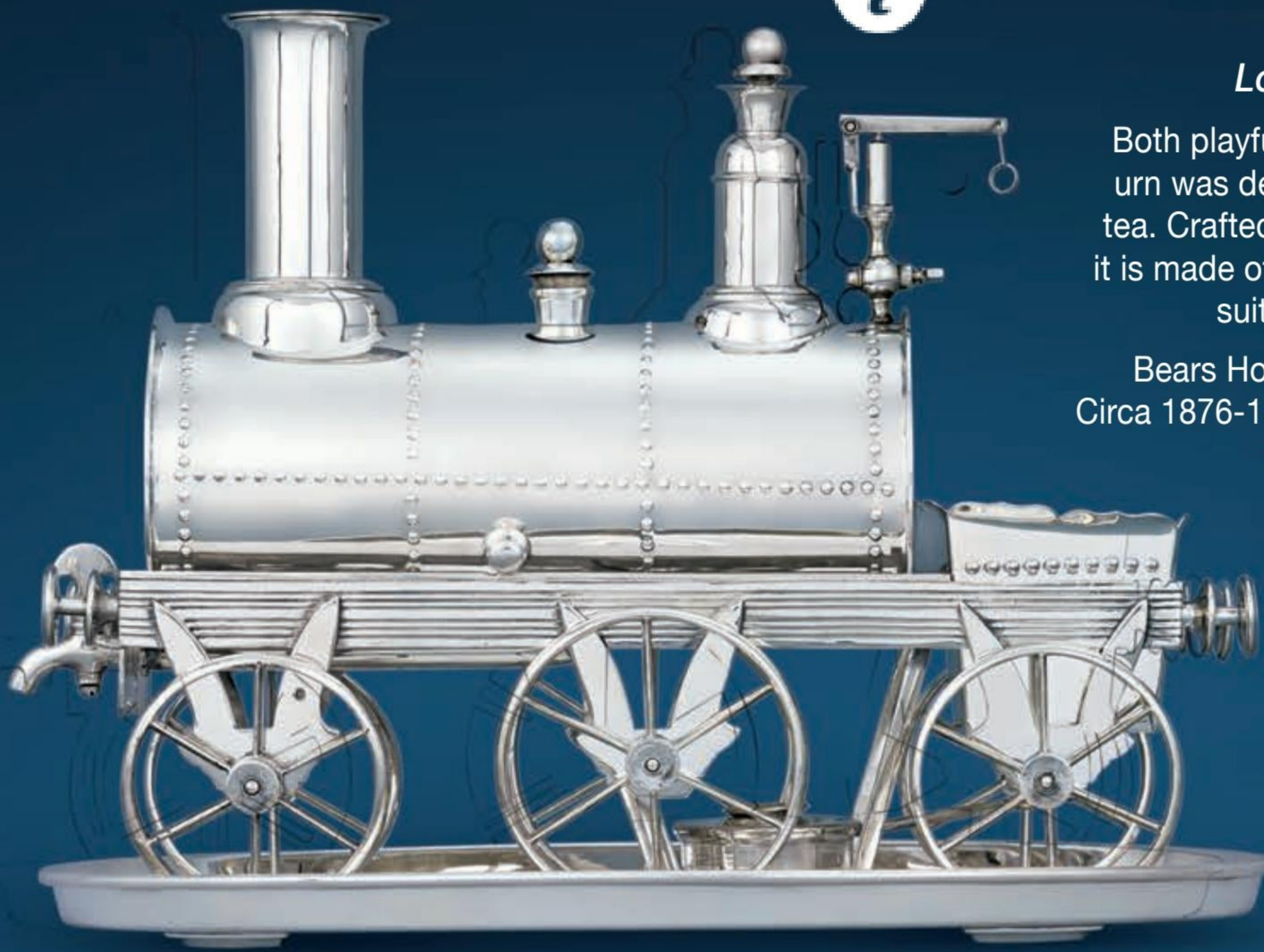
### *Elkington & Co. Silverplate Lap Desk*

This smart lap desk features cut glass inkwells, a candle holder and ample storage within. Elkington was known for pioneering and perfecting electroplating, evidenced by the finely detailed neoclassical motif adorning this desk's exterior.

Bears the Elkington & Co. mark • Circa 1890  
13"w x 15<sup>1</sup>/<sub>2</sub>"d x 9<sup>1</sup>/<sub>2</sub>"h  
\$8,850 • #31-4721







### *Locomotive Tea Urn*

Both playful and utilitarian, this train tea urn was designed to heat and dispense tea. Crafted by Horace Woodward & Co., it is made of silverplated copper, materials suited to insulate hot tea.

Bears Horace Woodward & Co. mark  
Circa 1876-1893 • 16<sup>1</sup>/<sub>8</sub>"w x 12<sup>1</sup>/<sub>8</sub>"d x 11<sup>5</sup>/<sub>8</sub>"h  
\$24,500 • #31-4993



### *Christopher Dresser Tea Set*

Groundbreaking in its design, this tea set exhibits Dresser's signature modern lines and streamlined structure. Although made in 1879, the pieces display a modernity beyond their time, anticipating the popular Mid-Century Modern designs of the next century.

Stamped "Ch. Dresser" • Circa 1879  
Teapot: 7<sup>1</sup>/<sub>4</sub>"dia. x 4<sup>1</sup>/<sub>4</sub>"h  
\$34,500 • #31-5473





***Sheffield Silver Plate Centerpiece***

This George III-period rolling dessert stand is crafted of desirable Sheffield silver plate with fine piercing and engraving throughout.

Circa 1780 • 18<sup>3</sup>/<sub>4</sub>"w x 18<sup>1</sup>/<sub>2</sub>"h  
\$18,500 • #30-1013



***Christofle Wine Trolley***

This wonderful grapevine motif wine trolley was designed to hold a bottle of wine at an angle for optimum breathing and to be easily rolled along to guests.

Marked "Christofle" • Circa 1890  
12<sup>1</sup>/<sub>2</sub>"w x 8"d x 9<sup>3</sup>/<sub>4</sub>"h  
\$12,850 • #30-7517





## *Blown Away*

Delicately crafted glass objects  
that glow from within.

### *Daum Nancy Glass Casket*

This enchanting iridescent glass casket features finely detailed silver clover mounts encircling richly hued glass by the renowned French firm Daum Nancy.

Signed "Daum Nancy"  
Early 20th century • 4½"sq. x 5¼"h  
\$14,500 • #31-3813

### *Elkington & Co. Wine Decanters*

This rare pair of cut ruby glass decanters are mounted with gilt silver by Elkington & Co. in a grapevine motif, indicating their intended purpose.

Hallmarked 1891 • 5½"dia. x 11¼"h  
\$22,850 • #31-4715





***Daum Nancy Cameo Glass Lamp***

An intricate nautical scene is depicted in warm cameo glass, mimicking an ocean sunset in this Art Nouveau lamp.

Signed "Daum Nancy"  
Circa 1910 • 4"dia. x 12<sup>1</sup>/<sub>4</sub>"h  
\$16,850 • #31-3778



***Emile Gallé Art Glass Vase***

This vase is a stunning example of Gallé's fascination with Asian art, particularly that of Japan. His skillful execution of these motifs demonstrates why his works are among the most desired glass in the world.

Signed "Gallé" • Circa 1900 • 4"dia. x 11<sup>3</sup>/<sub>8</sub>"h  
\$3,850 • #31-5155





# Artfully Made

Magnificent ceramics and porcelain that elevate craft to an art form.

## Wedgwood Tricolor Snake Handle Vase

This important vase is distinguished as one of the most desirable designs ever created by Wedgwood for its elegant, perfectly preserved serpent handles — a rare inclusion for the firm. It is further set apart by its complex tricolor diceware body, which required the highest levels of artistry to execute.

Stamped “Wedgwood”  
 Circa 1850 • 5<sup>3</sup>/<sub>4</sub>”dia. x 14<sup>3</sup>/<sub>4</sub>”h  
 \$19,850 • #31-4256

## Tricolor Diceware Bough Pots

This pair of pots features a rare design in the firm’s diceware pattern, among the most intricate of Wedgwood’s motifs. Today, tricolor diceware pottery is highly uncommon and eagerly sought after by collectors.

Stamped “Wedgwood”  
 Circa 1800 • 4<sup>1</sup>/<sub>2</sub>”dia. x 6<sup>1</sup>/<sub>8</sub>”h  
 \$12,850 • #31-4254





### *Majolica Wine & Water Ewers*

These ewers are made after the famed models of John Flaxman, a leading artist of the Neoclassical style. Wedgwood began producing majolica in 1860 to great acclaim, and it is sought after for its rarity and vivid high-gloss finish.

Stamped "Wedgwood"  
Made in 1867 • 8" dia. x 17"h  
\$12,850 • #31-4266



### *Black Basalt Pastille Burner*

One of Wedgwood's most innovative achievements, black basalt is desirable for its striking color and strength. This decorative burner was designed to burn aromatics.

Stamped "Wedgwood"  
Early 19th century • 9<sup>4</sup>/<sub>5</sub>" dia. x 12<sup>1</sup>/<sub>2</sub>"h  
\$12,850 • #31-4241





***Jesus in the Temple by KPM***

The Royal KPM porcelain factory represented the height of technical and artistic achievement in Prussia in the 19th century, epitomized by this hand-painted plaque.

Marked "KPM" • 19th century  
Frame: 31" h x 27<sup>3</sup>/<sub>8</sub>" w  
\$24,500 • #31-3636



***Jacob Petit Porcelain Perfumes***

Natural motifs and rich color distinguish these perfume bottles by Jacob Petit, the most significant producer of French Rococo ornamental wares.

Circa 1835 • Each \$3,450  
Left: 4<sup>3</sup>/<sub>4</sub>" w x 3<sup>3</sup>/<sub>4</sub>" d x 6<sup>1</sup>/<sub>2</sub>" h • #31-1708  
Right: 4<sup>1</sup>/<sub>2</sub>" sq. x 9<sup>1</sup>/<sub>4</sub>" h • #31-1706





### *Meissen Wall Sconces*

Decorated with Meissen's hallmark hand-painted intricacy, these porcelain sconces are lit by candle arms.

Marked with Meissen swords  
Circa 1880 • 16" w x 7" d x 16 1/2" h  
\$18,500 • #30-2103



### *Flora Danica Serving Platter*

This platter by Royal Copenhagen, hand-painted with a scene of a musk ox, is part of the exceptionally rare *Flora Danica* Game Series. As with all *Flora Danica*, this animal's Latin name is painted on the reverse.

Features Royal Copenhagen mark  
20th century • 18 3/8" w x 14 1/8" d  
\$14,850 • #30-7696



# Rich History

Rare objects and artifacts that have a story to tell.

## WWI Soldier Trench Art

These 78 drawings, all unique and hauntingly beautiful, were created by WWI German and Austro-Hungarian soldiers. Each is accompanied by captions and notes from the soldiers who made them, offering fascinating insight into the daily lives, hopes and fears of those who served on the front. Assembled in a handmade volume.

Circa 1914-18 • 14" w x 12 1/4" d x 3" h  
\$48,500 • #31-1010



Around the world! Hail  
To all the Viennese, Happy 1916  
The globe has a corner.

Best greetings to the change of the year to  
all the Viennese and people of Weidling the  
merry Deutschmeisters

We ask for publication in your esteemed  
paper



### *CX-52 Model Swiss Cipher Machine*

Used to encrypt and decode messages, the CX-52 was first developed in 1952, and its code was considered virtually unbreakable by the NSA.

Circa 1960 • 12”w x 8”d x 6¼”h  
\$29,500 • #31-3728



### *Napoleonic Prisoner-of-War Guillotine*

An incredible and extremely rare artifact of world history, this working mutton bone model of a guillotine was created during the Napoleonic wars by a French prisoner of war. 🏰

Circa 1810 • 9½”w x 11¾”d x 20½”h  
\$39,850 • #31-5104

Scan to watch videos of items with the 🏰 icon







### *Shango Dance Wand*

This traditional African Shango dance wand would have been carried by a priest or priestess during a festival or procession honoring the Yoruba deity of thunder. The wand is called an *oshe shango* and includes a double-headed ax and a figure representing a female supplicant.

Late 19th century • 19 $\frac{1}{2}$ "h  
\$3,450 • #30-0984



### *Roman Bronze Hand Mirror*

This ancient mirror features a bronze disk that was polished to a reflective shine, allowing the viewer to gaze at their reflection before glass mirrors were invented.

1st century • 4 $\frac{1}{2}$ "w x 7 $\frac{7}{8}$ "h  
\$14,500 • #31-4090





***Ming Dynasty Warrior Roof Tile***

Terracotta warriors such as this were commonly placed on temples and private households in Ming Dynasty China and were thought to ward off evil spirits and bring luck to the occupants.

1368-1644 CE • 10”w x 6”d x 15½”h  
\$12,500 • #30-3450



***Pre-Columbian Mayan Bowl***

This Late Classic Mayan bowl is executed in the Copador style, a polychrome ceramic style found primarily at archaeological sites in western El Salvador.

600-900 CE • 5”dia. x 5”h  
\$6,450 • #29-9711



# Something Special

Objets d'art that demonstrate meticulous craftsmanship and true luxury.



## *Duke & Duchess of Windsor Snuff Box*

This Louis XV gold snuff box hails from the prestigious collection of Edward VIII and Wallis Simpson. As one of the most romantic and scandalous couples of the 20th century, their possessions are highly desirable.

Circa 1765 • 2½" w x 1¼" d x 1¼" h  
\$38,850 • #31-2405



## *Rosso Antico Marble Potpourri Vases*

Combining contrasting marbles and gilt bronze, these potpourri vases epitomize opulent artistry. The vessels are topped by pierced lids, allowing the scent to disperse throughout the room.

18th century • 7¼" w x 4¾" d x 8½" h  
\$24,500 • #31-4735







### *Italian Marble Centaurs*

These remarkable marbles are based on the famous classical sculptures, the Furietti Centaurs, excavated at Hadrian's Villa in 1736. Wildly popular when they were discovered, the centaurs were the subject of a number of reproductions. While most examples are bronze reductions, this pair is an exceptionally rare version crafted from marble.

19th century • 17<sup>3</sup>/<sub>4</sub>"w x 10<sup>5</sup>/<sub>8</sub>"d x 25<sup>7</sup>/<sub>8</sub>"h  
\$38,850 • #31-3928





*Fluorspar and Ormolu Clock Garniture*  
This beautiful French clock garniture, styled in the Louis XV taste, is crafted of richly veined and brightly-hued fluorspar with ornate cast ormolu bronze mounts. Its exuberant design celebrates classical ideals and Rococo luxury.

19th century • Clock: 7" w x 4<sup>1</sup>/<sub>4</sub>" d x 15" h;  
Candelabra: 6" dia. x 11" h  
\$29,850 • #31-3649





***Micromosaic and Agate Box***

The elaborate micromosaic medallion on the lid of this box depicts St. Peter's Square in Vatican City in painstaking detail. The box itself is composed of panels of vividly-hued agate mounted in doré bronze.

19th century • 4" w x 2<sup>5</sup>/<sub>8</sub>" d x 2<sup>3</sup>/<sub>8</sub>" h  
 \$12,850 • #31-4086



***Japanese Lacquer Writing Set***

This Meiji-period writing set is made of lacquer, an art form considered among the most beautiful and labor intensive in the world. The Japanese perfected the complex process, as evidenced by this stunning set.

Circa 1890 • 9" w x 1<sup>1</sup>/<sub>2</sub>" d x 10<sup>3</sup>/<sub>4</sub>" h  
 \$28,500 • #29-9114





# *Fine Furnishings*

Rare and important pieces of furniture and decor that complement every style.



## ***Mahogany Oval Library Desk***

This English library desk features a rare oval shape, elegant lines and its original tooled leather top. Drawers and shelves are hidden behind doors that have been skillfully crafted and set on a convex surface.

Circa 1900 • 59½" w x 44¼" d x 30" h  
\$74,500 • #31-4913



***Adam Giltwood Girandole Mirrors***

These majestic hand-carved girandole style mirrors are exemplary of the Adam brothers' neoclassical designs inspired by the 18th-century excavations of Pompeii and Herculaneum.

Circa 1780 • 24" w x 56 1/2" h  
\$54,500 • #31-4558



***Rouge de France Marble Pedestal***

Quarried only in France, Rouge de France marble has been sought-after since antiquity for its vibrant colors and patterns, and this pedestal is hewn from a particularly striking specimen.

18th century • 16 1/8" w x 10 3/4" d x 47 1/4" h  
\$38,500 • #30-9253





*Jockey Scale by W. & T. Avery*

A fascinating object of horse racing history, this chair also serves as a scale that would have been used to weigh a jockey after a race to ensure he was not lighter than the rules allowed.

Marked "Avery" • Circa 1880  
32<sup>7</sup>/<sub>8</sub>"w x 24<sup>1</sup>/<sub>8</sub>"d x 37"h  
\$34,500 • #31-5268





***William IV-Era Specimen Chess Table***

A luxurious array of rare stones is inset into this game table's surface. The base is crafted of rich rosewood and Goncola Alves in the timeless style of Gillows of Lancaster.

Circa 1830 • 34<sup>3</sup>/<sub>8</sub>"w x 20<sup>3</sup>/<sub>4</sub>"d x 29<sup>1</sup>/<sub>4</sub>"h  
\$34,500 • #31-4764









### *Marquetry Billiards Table*

This beautifully constructed French billiards table would have been made for a 19th-century aristocratic country house, an age when the game was a favored pastime of the European elite. Its neoclassical design features intricate rosewood marquetry, and its bronze ball returns take the form of theatrical masks. Once pocketed, the ball drops into the mask, opening it and exposing the ball.

Circa 1870 • 105<sup>1</sup>/<sub>4</sub>"w x 57<sup>1</sup>/<sub>2</sub>"d x 34<sup>1</sup>/<sub>2</sub>"h

\$88,500 • #29-9657





## CURATED FOR THE COLLECTOR

FINE ART, JEWELS & OTHER RARITIES

## BUY WITH CONFIDENCE

### *EXPERTS IN OUR FIELD*

Everything in our gallery has been thoroughly researched and expertly vetted for quality and authenticity.

### *ON APPROVAL*

Many pieces can be sent to you on approval so you can view them in your home to ensure every item is the perfect fit. Complete details available at [msrau.com](http://msrau.com).

### *125% GUARANTEE*

Each piece we sell is backed by our 125% Guarantee, which offers 5% interest annually for up to five years.



Follow us on social media to learn about our latest acquisitions, special exhibitions and more.